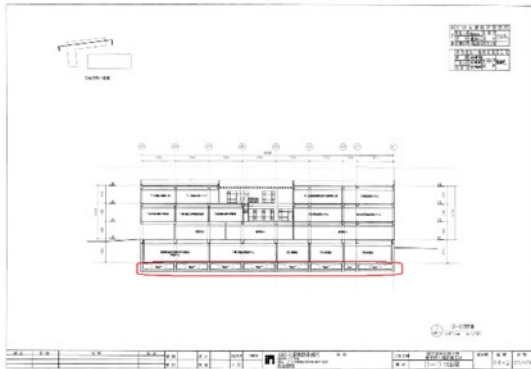


The sewage treatment facility has the capacity to reclaim up to 600 tons daily, amounting to an annual water saving of approximately 180,000 to 220,000 cubic meters. This recycled water is utilized for landscaping within the school district, as a fire-fighting resource, for artificial lake replenishment, and as flush water for the 15 student dormitories. The cost to produce one cubic meter of recycled water is around 1 to 3 New Taiwan Dollars. Overall, the dormitories collectively save an average of 30,000 to 40,000 cubic meters of water annually, contributing significantly to our water conservation efforts.

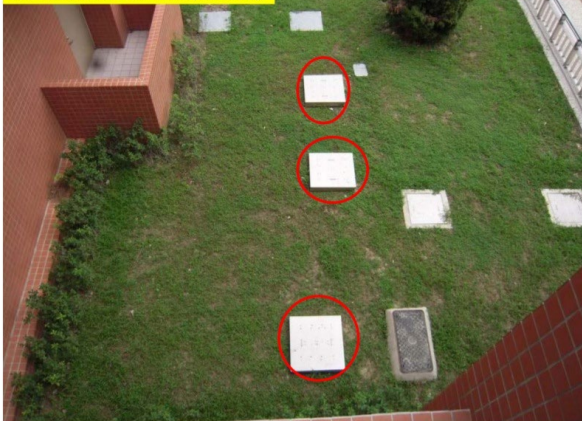


工程五館採用雨水暫存槽55m³用以供應澆灌
(8.5m × 5m × 1.3m)。

水質檢測項目	數值
蓄水量 (長*寬*高*數量)	8.5 m * 5 m * 1.3 m = 55.3 m ³
pH	7.1
導電度	125.8 μs/cm
濁度	1 NTU

Rainwater Collection and Utilization System

紅圈處為雨水蓄水池(鳥瞰圖)



Rainwater reservoir in building



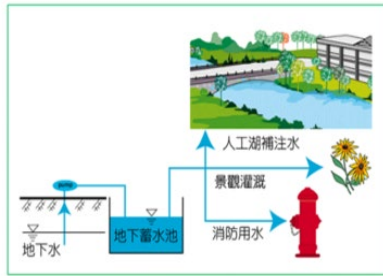
光電感應自動沖水小便斗



低流量水龍頭



二段式節水裝置



國立雲林科技大學中水道設置前，景觀灌溉、消防用水、人工湖補充水之供水情形

Building-Specific Reclaimed Water System

YunTech has implemented a campus-wide greywater recycling system designed for landscaping, fountains, firefighting, maintaining road moisture, and irrigating plants and trees.



In alignment with the water conservation policies of the Water Resources Agency, Ministry of Economic Affairs, we have installed water-saving devices to reduce consumption.

These devices include automatic sensor-operated toilet flush valves and faucets, enhancing our

commitment to environmental sustainability.