

Water consumption tracking

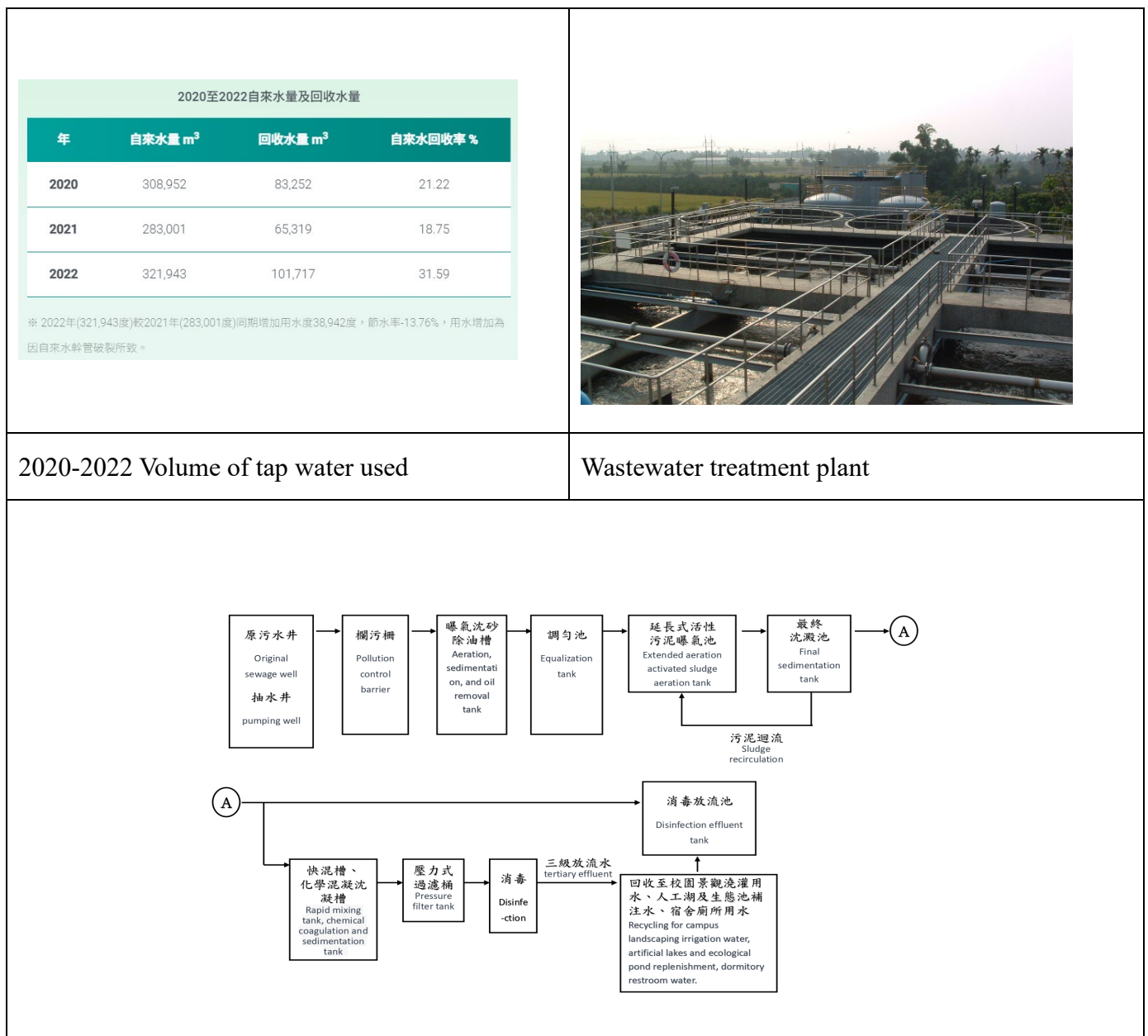
<https://www.yuntech-csr.tw/tw/environmental/management>

YunTech purchases tap water from the government-owned Taiwan Water Corporation for its use.

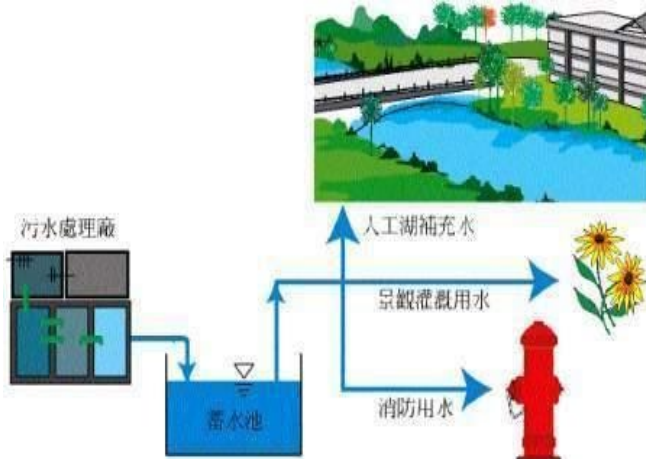
We measure the total volume of water utilized throughout the university. Additionally, YunTech adheres to environmental protection laws and regulations. The university has a sewage treatment plant with a maximum daily capacity of approximately 1,500 tons. The biological extended aeration method is employed to treat the domestic sewage produced, ensuring that the water quality meets the effluent standards before being discharged into the Bajiao River Basin without causing pollution. Moreover, YunTech has built a campus water recycling system for landscape irrigation, fountains, firefighting, road moisturizing, hydrophilic facilities, and watering of flora.

Evidence

YunTech purchases tap water from the government, and uses various water-saving measures to effectively use water resources.

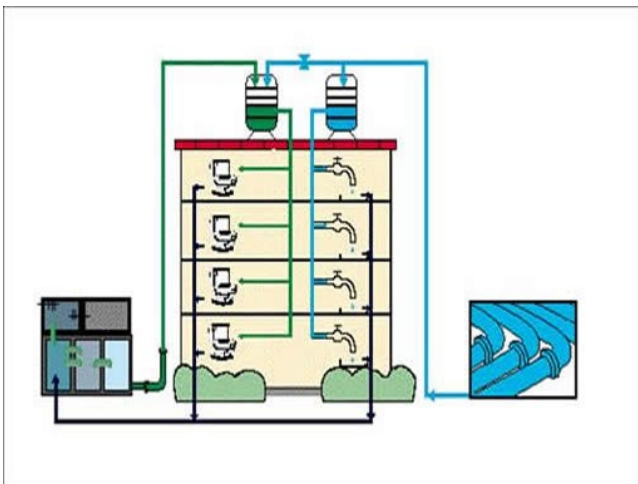


Flowchart of wastewater treatment facilities at our university.



How to use recycled water

Water purification plant (equalization tank)



Water recycling system