

[SDG 10.6.5] Diversity and Equality Committee, Office and/or Staff

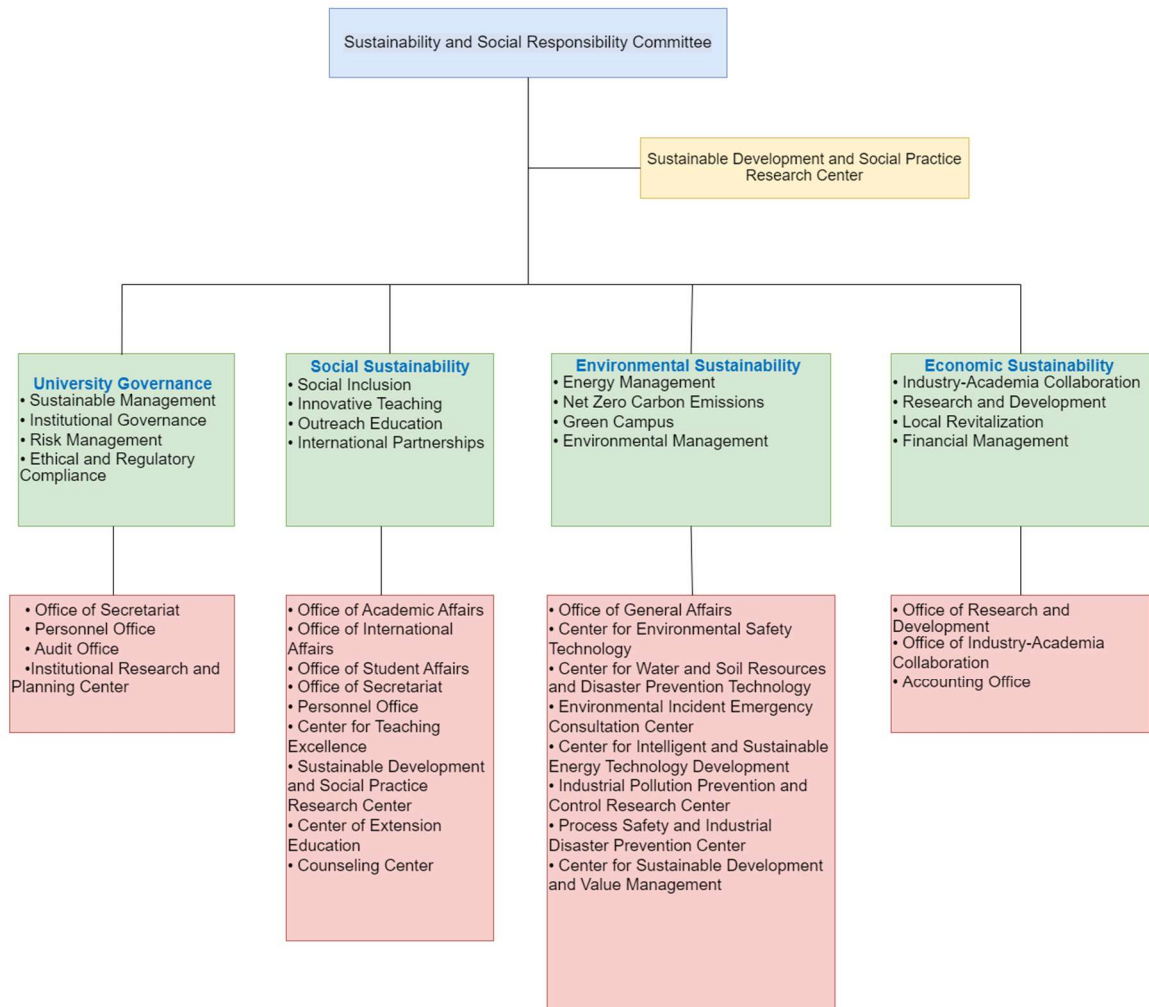
Does your university as a body have a diversity and equality committee, office and/or officer (or the equivalent) tasked by the administration or governing body to advise on and implement policies, programmes, and trainings related to diversity, equity, inclusion and human rights on campus?

Item 1 Description

YunTech has established the Sustainable Development and Social Responsibility Committee to oversee sustainability matters, including equality, diversity, and inclusivity. The committee is chaired by the university president and consists of four task groups responsible for executing sustainable initiatives. The Sustainable Development and Social Practice Research Center functions as the supervisory and coordinating unit.

The Sustainable Development and Social Responsibility Committee serves as the supervisory body for EDI policies, programs, and training. The implementation of EDI policies is assigned to the following units:

1. **Office of Secretariat:** Responsible for formulating policies, regulations, and educational planning related to gender equality.
2. **Counseling Center:** Engages in gender equality education advocacy and provides assistance for individuals with disabilities.
3. **Student Affairs Office:** Assists economically and culturally disadvantaged groups and indigenous communities.
4. **Academic Affairs Office:** Develops and implements policies for the admission of individuals with disabilities, economically and culturally disadvantaged groups, indigenous communities, and island residents.
5. **Personnel Office:** Formulates and implements EDI-related regulations and handles complaints regarding violations of EDI policies.



Item 1 Evidence.

Implementation of EDI

<https://en.yuntech-csr.tw/esg-social-into/equality-diversity-and-inclusion-edi-policy/>

<https://en.yuntech-csr.tw/esg-governance-into/equality-diversity-and-inclusion-committee-office-or-officer/>

Records of activities promoting the concept of gender equality

<https://en.yuntech-csr.tw/wp-content/uploads/2023/08/676264c87631d0adc.pdf>

Gender Equality Activities webpage

<https://yuntech-gender-equity.weebly.com/>

support for disable student evidence

<https://en.yuntech-csr.tw/wp-content/uploads/2023/08/583464c87a711a08a.pdf>